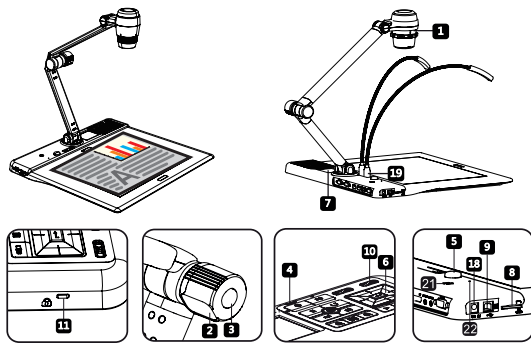




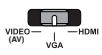
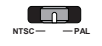













# Lancement rapide de votre visualiseur Speechi SPE-VI-801

Référence : SPE-VI-801

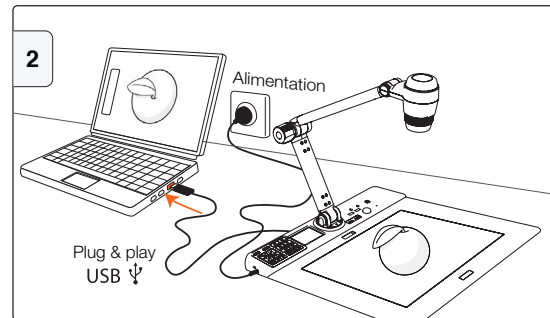
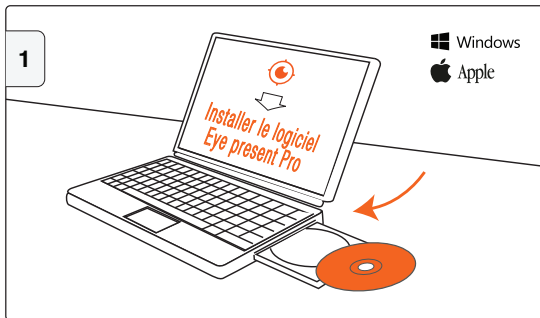


- 1 Tête de la caméra
- 2 Lampe
- 3 Bouton d'alimentation de la lampe
- 4 Indicateur LED
- 5 Récepteur de télécommande/signal
- 6 Panneau de contrôle
- 7 Écran LCD / Light Box
- 8 Fente pour carte SD
- 9 Port USB
- 10 Interrupteur du système TV
- 11 Fente antiviol
- 12 Port d'entrée VGA
- 13 Port de sortie VGA
- 14 Port d'entrée HDMI
- 15 Port de sortie HDMI
- 16 Port de sortie AV
- 17 Port d'entrée micro
- 18 Prise d'alimentation 5V DC
- 19 Lampe USB (optionnelle)
- 20 Port RS232
- 21 Haut-parleur
- 22 Microphone

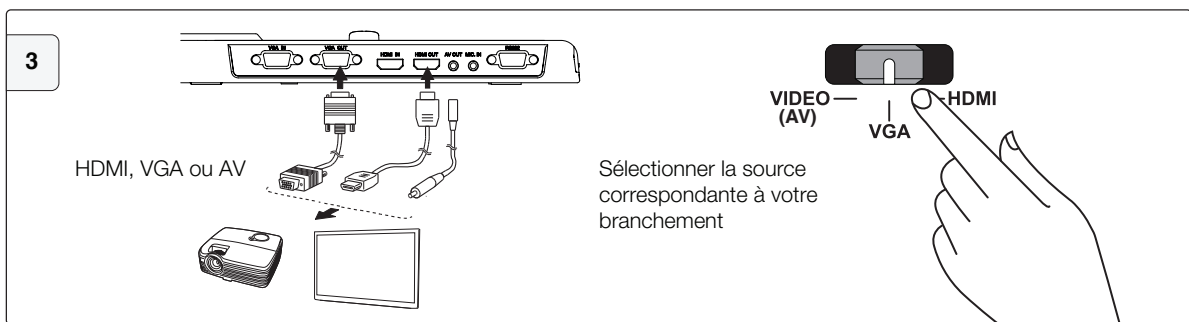
## Panneau de contrôle

-  Sélectionner le port de sortie.
-  Sélectionner le système TV.
-  Rétro-éclairage on/off (taille A4).
-  Marche/arrêt.
-  Passer le signal du PC via le port d'entrée RVB au port de sortie RVB.
-  Changer l'affichage. Changer la sortie d'affichage entre l'écran LCD 3" et l'appareil d'affichage externe.
-  Afficher ou cacher le menu OSD.
-  Geler l'image. \*Pause pour la lecture d'une vidéo.
-  Enregistrer une vidéo.
-  Capturer une image.
-  Mode lecture pour afficher les images et vidéos enregistrées.
-  Tourner l'image à 180°.
-  Sélectionner et ajuster.
-  Dézoomer/Zoomer.
-  Mise au point automatique.

## Avec un ordinateur via USB



## Sans ordinateur, directement sur un écran



## Support et ressources :

[www.speechi.net/fr/home/support/visualiseurs-de-documents-speechi/](http://www.speechi.net/fr/home/support/visualiseurs-de-documents-speechi/)

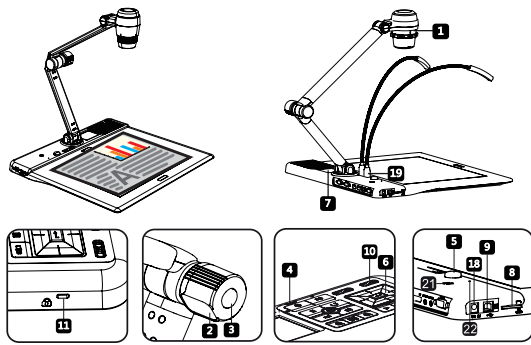
## Email :

[support@speechi.net](mailto:support@speechi.net)



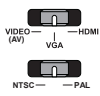
# Quick start guide for Speechi document camera SPE-VI-801

Reference: SPE-VI-801



- 1 Camera head
- 2 Lamp
- 3 Lamp power button
- 4 Led indicator
- 5 Remote control signal receiver
- 6 Control panel
- 7 LCD Display / Light Box
- 8 SD Card slot
- 9 USB port
- 10 TV System Switch
- 11 Antitheft slot
- 12 VGA Input Port
- 13 VGA Output Port
- 14 HDMI Input Port
- 15 HDMI Output Port
- 16 AV Output Port
- 17 MIC Input Port
- 18 DC 5V Power Socket
- 19 USB Light (Optional)
- 20 RS232 Port
- 21 Speaker
- 22 Microphone

## Control Panel



Select output port.



Select TV System.



( A4 size ) Backlight on/off.



Power on/off.

PC

Transfer signal from PC via RGB input port to RGB output port. (pass-through)



Display toggle. Toggle between the 3" LCD display and external display device.



Show or hide OSD menu.



Freeze the current image. \*Pause the clip while playing videos.



Record a video clip.



Capture a still image.



Playback mode to display recorded pictures and video clips.



Invert image 180°.



Select and adjust.

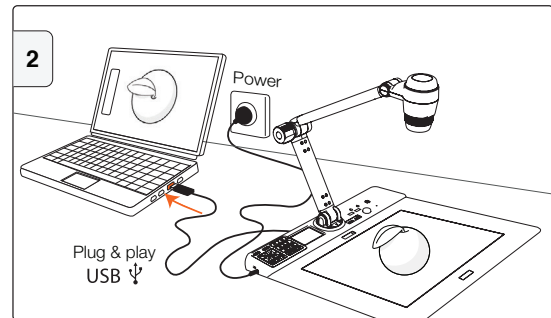
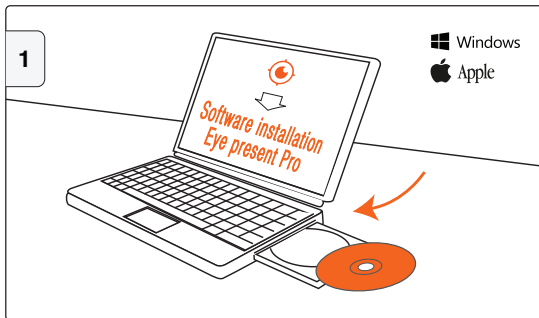


Zoom out / Zoom in.

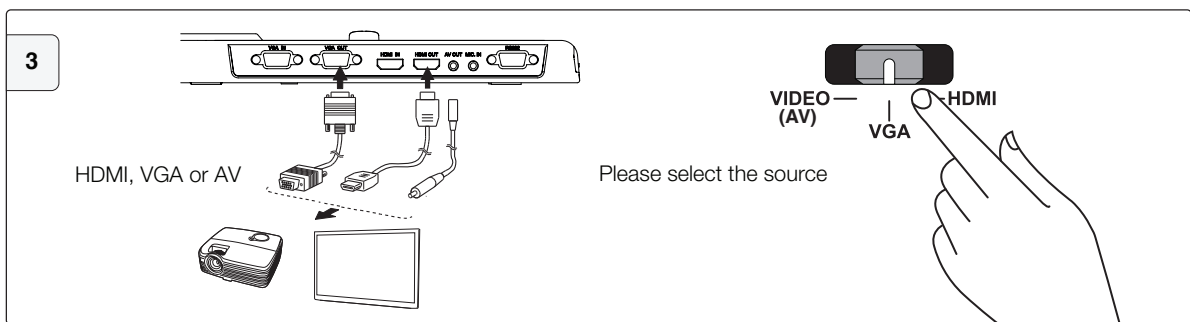


Auto-focus.

## With a computer via USB



## Without a computer, direct connection to a screen



## Support:

[www.speechi.net/fr/home/support/visualiseurs-de-documents-speechi/](http://www.speechi.net/fr/home/support/visualiseurs-de-documents-speechi/)

## Email:

[support@speechi.net](mailto:support@speechi.net)