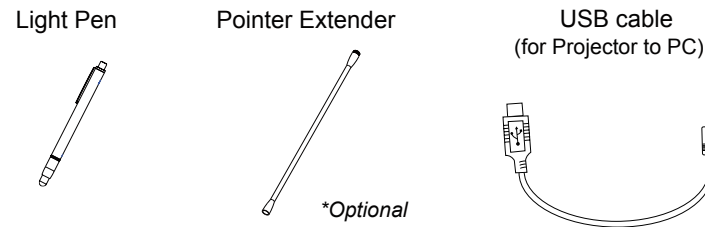
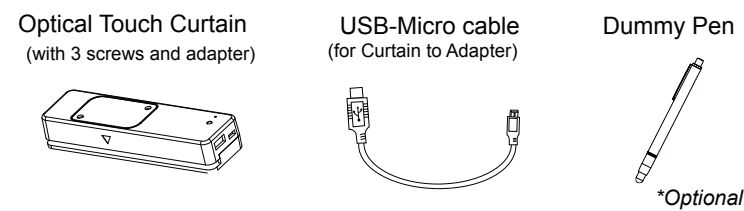


Accessories Following items depend on your model, please check with your dealer.

• Interactive with Light Pen



• Interactive with Curtain Module



System Requirements

To ensure the interactive function works properly, please check your computer system to see if it meets the following conditions.

• Windows

Touch Calibration / LightPen3

OS Required	Windows 7 (32bit/64bit)/Windows 8/ Windows 10 (Must be installed. NET Framework 4.0)
Processor Type	Intel® Core™ i3 or above
RAM	2GB above
Min. Free disk space	110 MB
Projection Size	70"~ 100"

• Mac

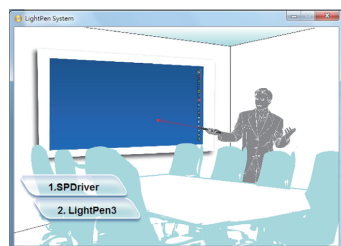
Touch Calibration / LightPen3

OS Required	Mac OS X v10.8 above
Processor Type	Intel® Core i2
RAM	2GB above
Min. Free disk space	100 MB
Projection Size	70"~ 100"

"Touch Calibration" Installation

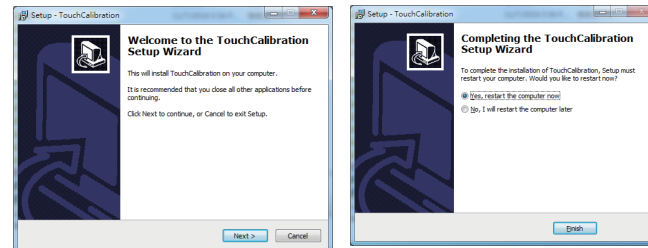
• Windows

- Step 1. Insert the "Owner's Manual" CD-ROM into the CD drive.
- Step 2. Open the "LightPen Software for Windows" folder in the CD-ROM.
- Step 3. Double click "Setup.exe" by mouse. And then the window will appear as below.



Step 4 .

- (1) Click "SPDriver" by mouse. And then "Setup Wizard" window will appear as below. Click "Next" to install.
- (2) You can choose to install folder depend on your requirements, or use the default folder. Then click "Next" to continue.
- (3) Please wait for a while for the installation. Installation is finished.



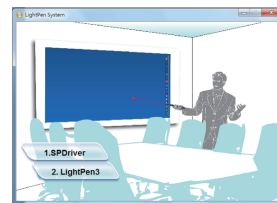
• Mac

- Step 1. Insert the "Owner's Manual" CD-ROM into the CD drive.
- Step 2. Open the "LightPen Software for Mac" folder in the CD-ROM and copy "mac.zip" to the disk.
- Step 3. Double click and move SPDriver ICON to computer screen and execute it.

LightPen3 Software Installation

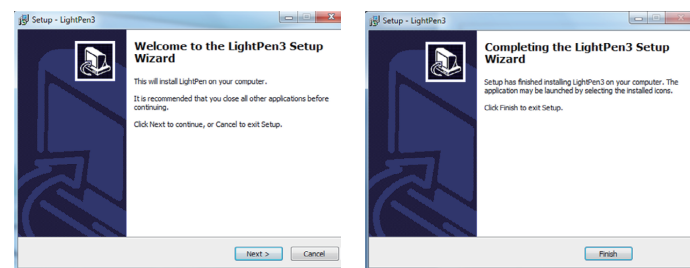
• Windows

- Step 1. Insert the "Owner's Manual" CD-ROM into the CD drive.
- Step 2. Open the "LightPen Software for Windows" folder in the CD-ROM.
- Step 3. Double click "Setup.exe" by mouse. And then the window will appear as below.



Step 4 .

- (1) Click "LightPen3" by mouse. And then "Setup Wizard" window will appear as below. Click "Next" to install.
- (2) You can choose to install folder depend on your requirements, or use the default folder. Then click "Next" to continue.
- (3) Confirm the information listed and select "Install".
- (4) Please wait for a while for the installation. Installation is finished.

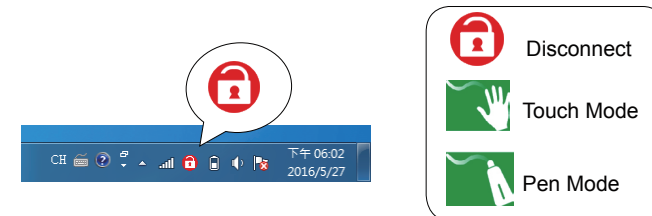


• Mac

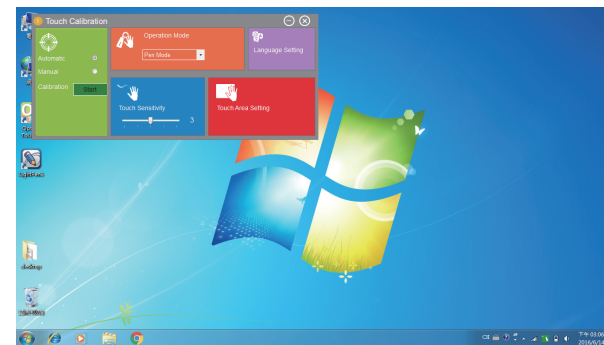
- Step 1. Insert the "Owner's Manual" CD-ROM into the CD drive.
- Step 2. Open the "LightPen Software for Mac" folder in the CD-ROM and copy "LightPen3.zip" to the disk.
- Step 3. Double click and move LightPen3 ICON to computer screen and execute it.

Initial Setup

After SPDriver finished, from "Start Menu/Touch Calibration/Touch Calibration/Touch Calibration" to execute it. (or click the icon on the desktop).



Connect supplied USB cable between projector and your PC which show below.



Operation Mode

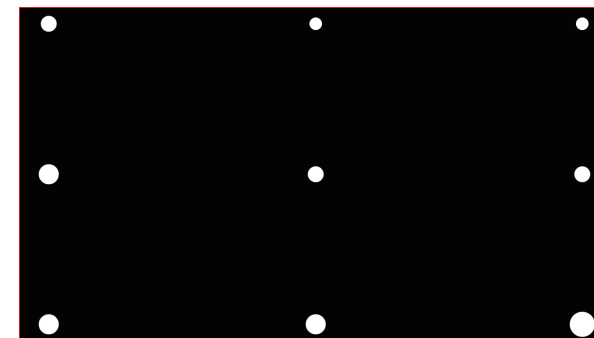
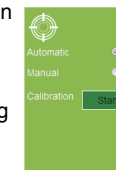
Default is Touch Mode. If you use the Interactive with Curtain Module, please choose "Touch Mode". If you use the interactive with Light Pen, please choose "Pen Mode". *It's depend on your accessories.*



Automatic Calibration

Select the "Automatic" and press "Start" to enter the calibration process. Before the "Automatic Calibration", please be sure:

1. Reduce ambient light.
2. Do not obstruct or shake lens during Touch Area Setting



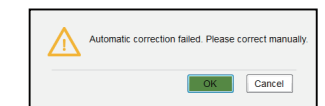
When "Automatic Calibration" finish, you can start using the "Touch Calibration".



And check the "Touch Area Setting". Make sure the green zone with projected white frame.



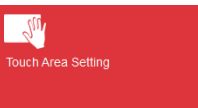
If fail message pops up, switch to "Touch Area Setting".



*Press "OK" continue to "Touch Area Setting".

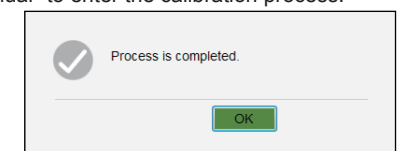
Touch Area Setting

Select the "Touch Area Setting". Align adjustable green zone with projected white frame.



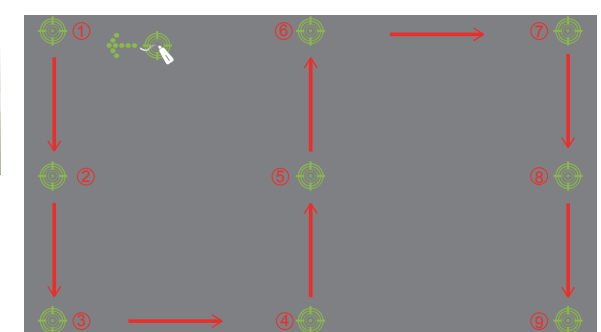
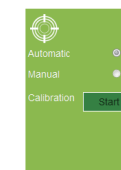
*The "Ambient light mode" can adjust the brightness of the screen. Press "-" and "+" to adjust the brightness.

Click on "1", use mouse to drag to upper left corner. Align adjustable green zone with projected white frame. Repeat the step to adjust the point from "1" to "4". Finally, check again if all the green frame overlap completely with projected white frame. If not, fine-adjust again. When the Touch Area is correctly located, click to "Exit." And select the "Calibration-Manual" to enter the calibration process.



Manual Calibration

After the "Touch Area Setting". Select the "Manual" and press "Start" to enter the calibration process. Use your Light Pen or Touch(with Curtain) to touch the circle shown on the screen. Then another circle appear, repeat this process until the 9th circle is finished.



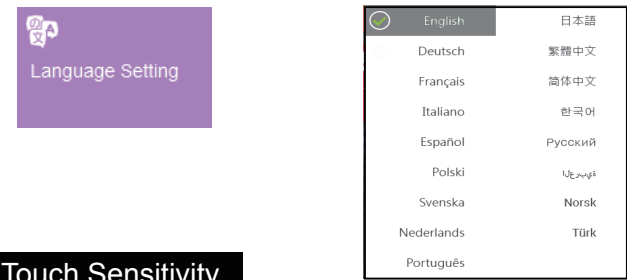
Note:  Pen Mode  Touch Mode

* Press "ESC" to exit the process.

* Press "UP" to recalibrate the previous one.

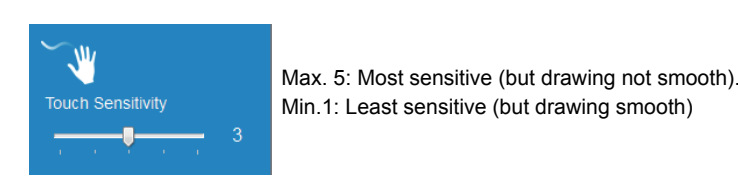
Language Setting

The screen menu of the projector is available in 17 languages



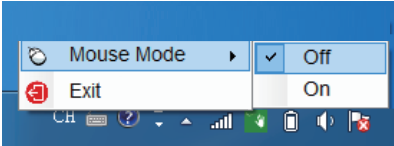
Touch Sensitivity

When touch function is unresponsive or writing is intermittent. You can adjust the sensitivity by adjusting Touch Sensitivity level:



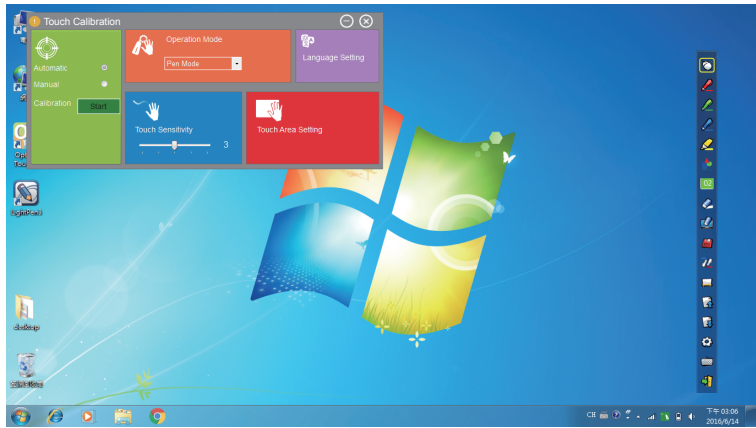
Mouse Mode

Click the mouse left key on the (or) icon in the task bar to show the menu.



LightPen3

When you complete the installation of LightPen3 and from "Start Menu /LightPen/LightPen3"(or click the icon on the desktop) to start it, you see the tool bar in the right side as shown below.



Function of each icon in the Tool bar

Icon		Description
	Mouse	Change function to Computer Mouse.
	Red pen	Change function to red pen.
	Green pen	Change function to green pen.
	Blue pen	Change function to blue pen.
	Marker pen	Change function to marker pen.
	Drawing tool	Draw a circle, a square, a triangle or a straight line.
	Fineness and color of pen	Select the fineness and color of pen.
	Eraser	Erase drawing.

Icon		Description
	Clean all	Erase drawing on the screen all at once.
	Save file	Save the current page into file in computer.
	Dual Pen	<Full Screen Mode> / <Split Screen Mode> support two pens writing at the same time
	White Board	Change function to white board.
	Page up	Go to last page.
	Page down	Go to next page.
	Edit tool	Edit drawing.
	Keyboard	On screen keyboard.
	Exit	Exit the application.

• Advanced function in Tool bar

(1) Drawing Tool

Select , then Drawing Tool function menu will be shown on the screen as below. Plese select the icon you want to use.



(2) Dual Pen

Select , then Dual Pen Mode setting menu will be shown on the screen as below. Please choose the screen mode to use.

Icon	Description
	Use two pens at the same time on full screen by same setting
	Use two pens at the same time on two split screen by different setting



(3) Whiteboard Mode

Select , screen will change to white color background. Original Page up and Page down function icon on Toolbar also change to import background icon and import whiteboard icon.



※ If you want to exit White board mode, just click again .

(4) Edit Tool

Select , edit tool bar is shown as blow.

Select drawing line as an object. An object can enlarge, decrease, or move

Rotate the drawing object you choice

Print the current page you are seeing

Undo the last operation

Redo the last operation

Spotlight function.

Curtain function.

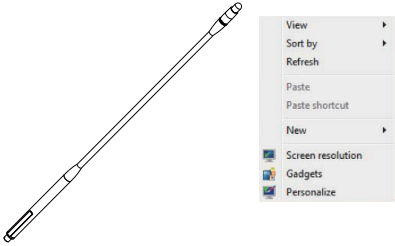
Change the vertical toolbar to a horizontal toolbar.

Switch the toolbar position to the right/left side.



Mouse right key function

Mouse pointer can be replaced by the Pointer or Light Pen. The left click or double click can be done by pressing the button when using Pointer or the tip of the Light Pen on the screen. If mouse pointer stays at the same position for 2-3 seconds, then it can be automatically changed to mouse right key function.



Troubleshooting

1. Q: Why does it show and Touch Calibration can't use?

A: Reasons for this might be:

(1) The USB cable does not be connected PC with Projector properly. Please check if the USB cable has been connected PC with Projector properly.

(1-1) If screen is shown as following images, it means you should connect the USB cable with PC and Projector, then execute driver again.



(1-2) In case of Windows OS, if the following image (A) pop up, it indicates that USB cable is not connected or the USB port is out of order. If icon is shown as (B), it means you can use LightPen program.If icon is shown as (C), it means you can use Touch(with Curtain) program.



(2) The USB cable is not proper. Please use the one included with projector.

(3) USB port on computer malfunctions. Please check if the USB port is functioning or not. If not, please consult with IT engineer.

2. Q: Why I cannot execute calibration on the circle targe mark?

A: (1) Please check if "Pointer" or "Light Pen" works:

(1-1) Please check if "Pointer" or "Pen" battery is low or battery cap is loose.

(1-2) When using "Pointer" or "LightPen", be sure to locate the tip of the "Pointer" or "LightPen" in the site of the CMOS sensor in front of the projector. If the sensor cannot see it, the Interactive system does not work.

The writing should be avoided in the shadows.

Using Light pen to maintain 25° or above with projection screen.

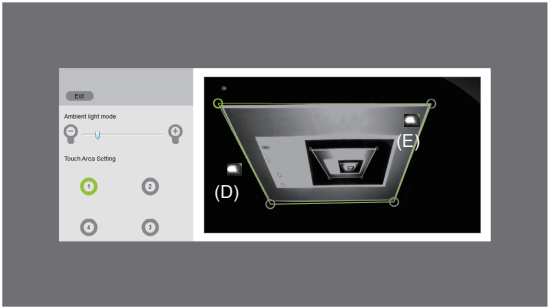


(2) The ambient light may be too strong. Take the light out of the site of the CMOS sensor.Strong ambient light is usually caused by the following:

(2-1) Sunlight through the windows near the screen.

(2-2) Light source working close to the sensor or the screen.

Please click the Touch Area Setting. If the ambient light out of the green zone as (D), it wouldn't cause the trouble. If the ambient light in the green zone as (E), you have to take off the light out of the sensor's site by moving the screen or turning off the light or using curtains etc..



Please take the light out until you can't see any light in the green zone.

3. Q: Why the cursor is not at the position that "Pointer" or "LightPen" pointed to?

A: Possible reasons for this are:

(1) The system is not calibrated well. Try to point to the "center" of circle target when you run calibration.

(2) The position of the projector, screen or projection size has been changed.

(3) The image resolution has been changed.

Running the calibration procedure again will solve the problem.

4. Q: Why is the cursor jumping?

A: This may be caused by strong ambient light interference. Try to avoid strong ambient light interference, especially strong sun light directly projected on the screen. (Please refer to the Question 2-2.)