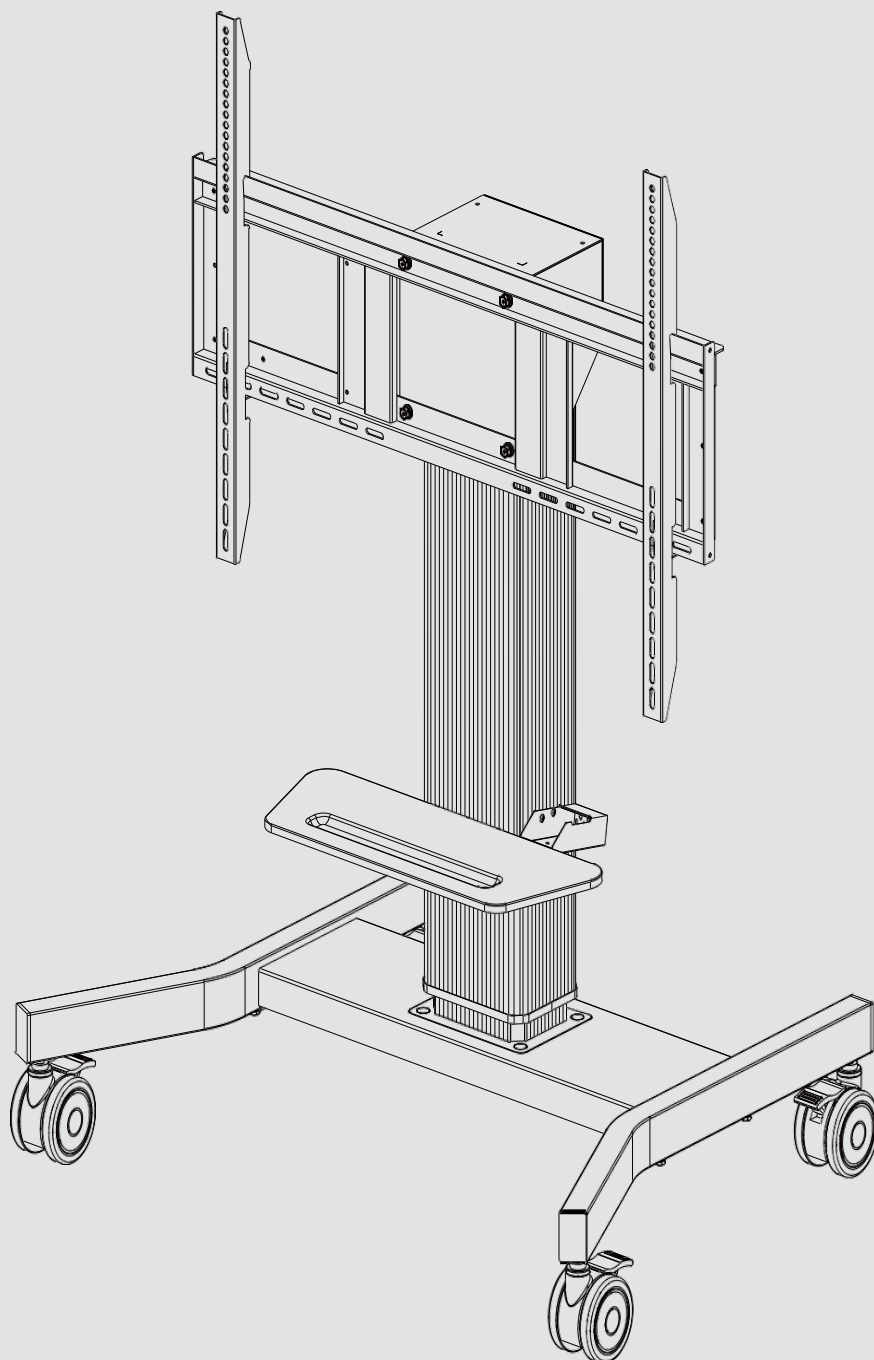


Installation manual

ST-SUP-MOB-ELE-002



- For using this product properly and safely, please follow the contents of the Installation and Operation Manual to install.
- It is suggested that this Electric Stand applies to the 55-86 inch intelligent panel. Use with other equipment may result in instability causing injury.
- This stand can carry a maximum weight of 100KG.

Safety information

Installer:

Before starting the installation, read the safety instructions, the mounting regulations and rest of this product manual carefully. Failure to read, thoroughly understand, and follow all instructions can result in serious personal injury and damage to equipment!

User:

Please carefully read the below safety information and user manual (if included) before using the height adjustable mount or stand. This ensures a failure-free working stand and avoids accidents.

Electrical Safety:

- Connect the stand to a properly grounded outlet only. Make sure the stand can be immediately separated from the power outlet.
- Only use the stand in dry rooms, protect it from water and other liquids. Only wipe the stand with dry cloth.
- Do not open lift unit. RISK OF ELECTRIC SHOCK. There are no serviceable parts inside.
- In case of dysfunction, unplug the stand from power outlet and call an authorised technical service person.
- Do not overrun power cord or damage it in any other way. Replace damaged power cords immediately with new identical ones.
- Where a plug on the power supply cord is used as the disconnect device, the socket-outlet shall be easily accessible.
- Disconnect main plug before moving the product.
- The stand is not dripping or splash water protected. Do not place objects filled with liquids on or spray the stand.
- To reduce the risk of electric shock: Always unplug the stand from the electrical outlet before cleaning.



Mechanical Safety:

- Always keep product's motion path free from obstacles.
- Before moving the stand up or down, assure at least a safety distance of 20 cm/ 7.9 inch from any part of the stand to any other fitment in order to avoid shear traps or squeezing points.
- In case of accident, please release operating panel. Movement of the stand will stop immediately.
- Only operate the stand on wheels on plane and stable floors. Move the stand on plane floors only. Risk of tilting when overrunning floor unevennesses, door sills and etc.
- Severe risk of injury when the stand tips over.
- Always move your stand with the screen in the lowest position. Do not push the Electric Stand from the front or back of lift.
- Do not move the Electric Stand by pushing on display.
- The bottom of the monitor or TV' s panel height is not over 0.85m from the ground after installed. Keep fingers and other body parts away from hazardous moving parts.
- Exceeding the weight capacity can result in serious personal injury or damage to equipment! It is the installer's responsibility to make sure the combined weight of all accessories and equipment attached to the product up to (and including) the display does not exceed the maximum load of 220 lbs / 100 kg.
- Use with heavier screens may result in instability causing tip over resulting in death or serious injury! The height adjustable feature of this stand will not function properly if the weight exceeds the given maximum load.
- The installation, maintenance and removal of the equipment should be carried by trained professional and skilled personnel.

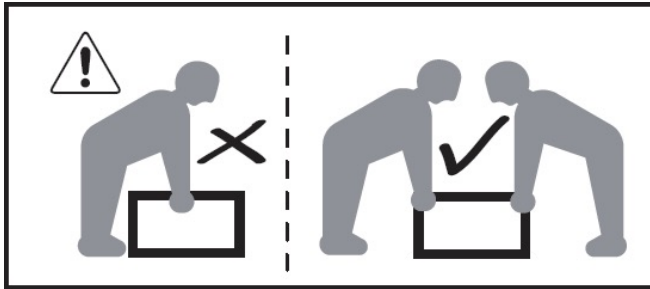
The intended use of the product:

- The product is intended to be used for the mounting and height adjustment of passive or interactive flat screen display panels.
- The product is intended for in-door use in classrooms, offices or meeting rooms, at temperatures ranging between 0 to 40 °C. Please make sure indoor environment is dry and cool. Normal operating humidity is 10%~90%RH.
- Do not use this product outdoors. The product is intended for use by adults; children under the age of 16 should only use the product under adult supervision.

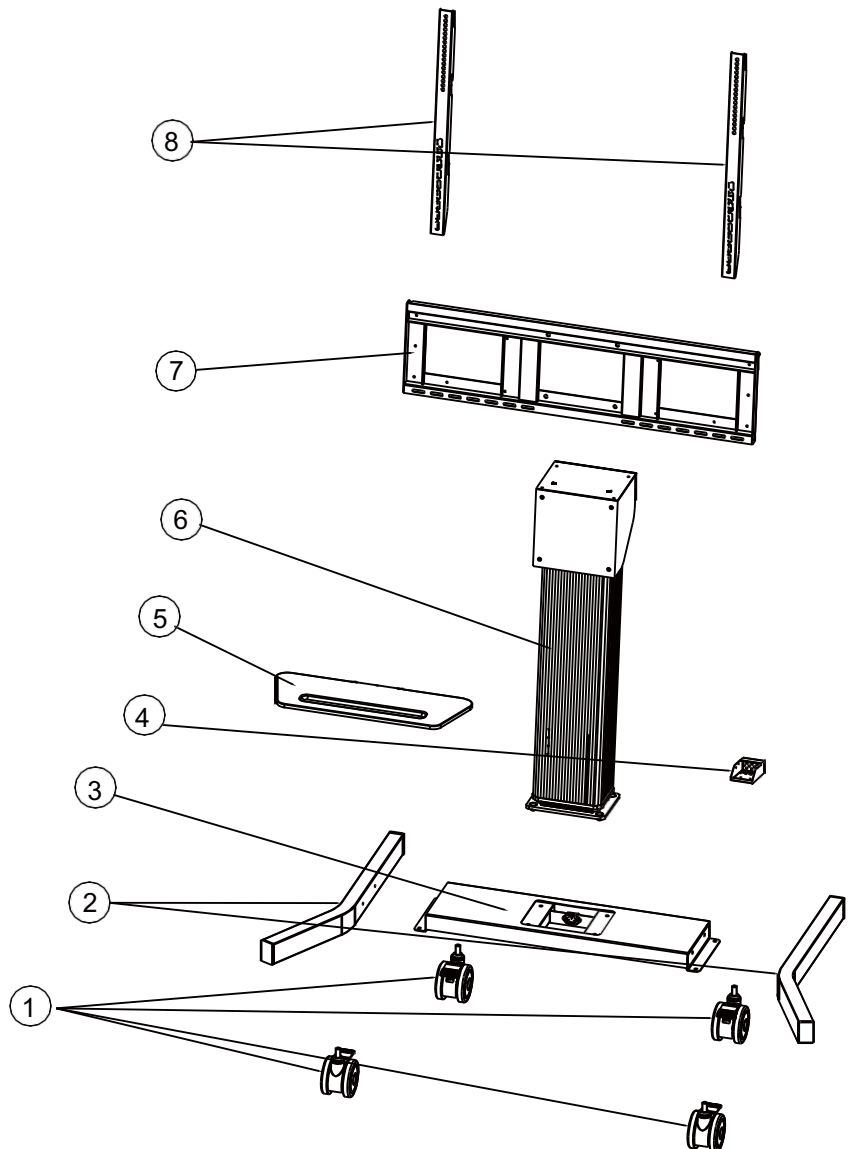
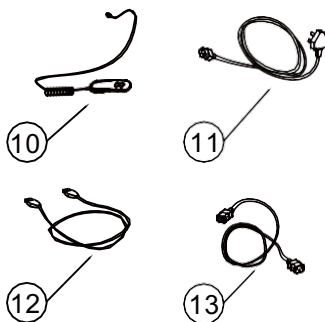


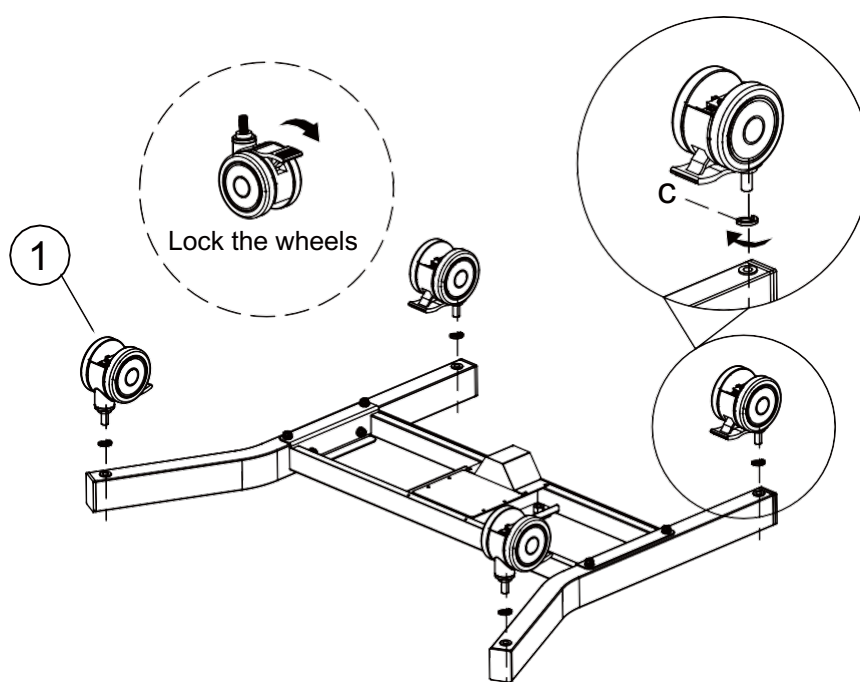
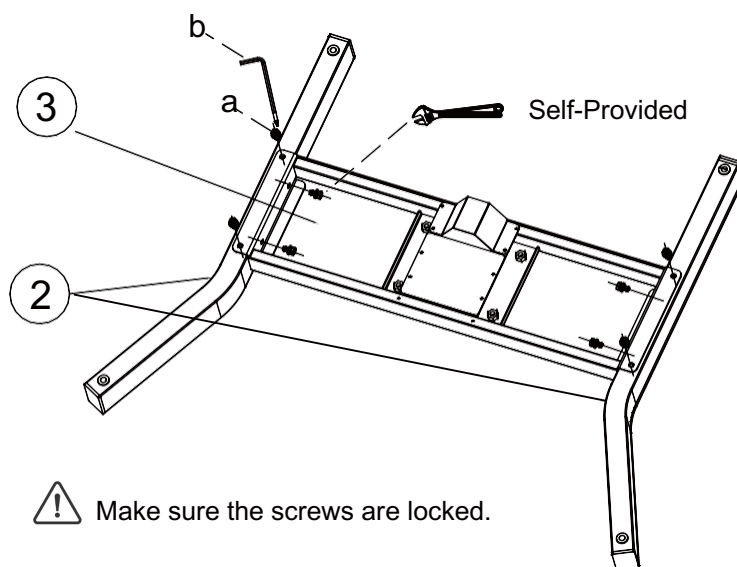
Parts

NOTE :

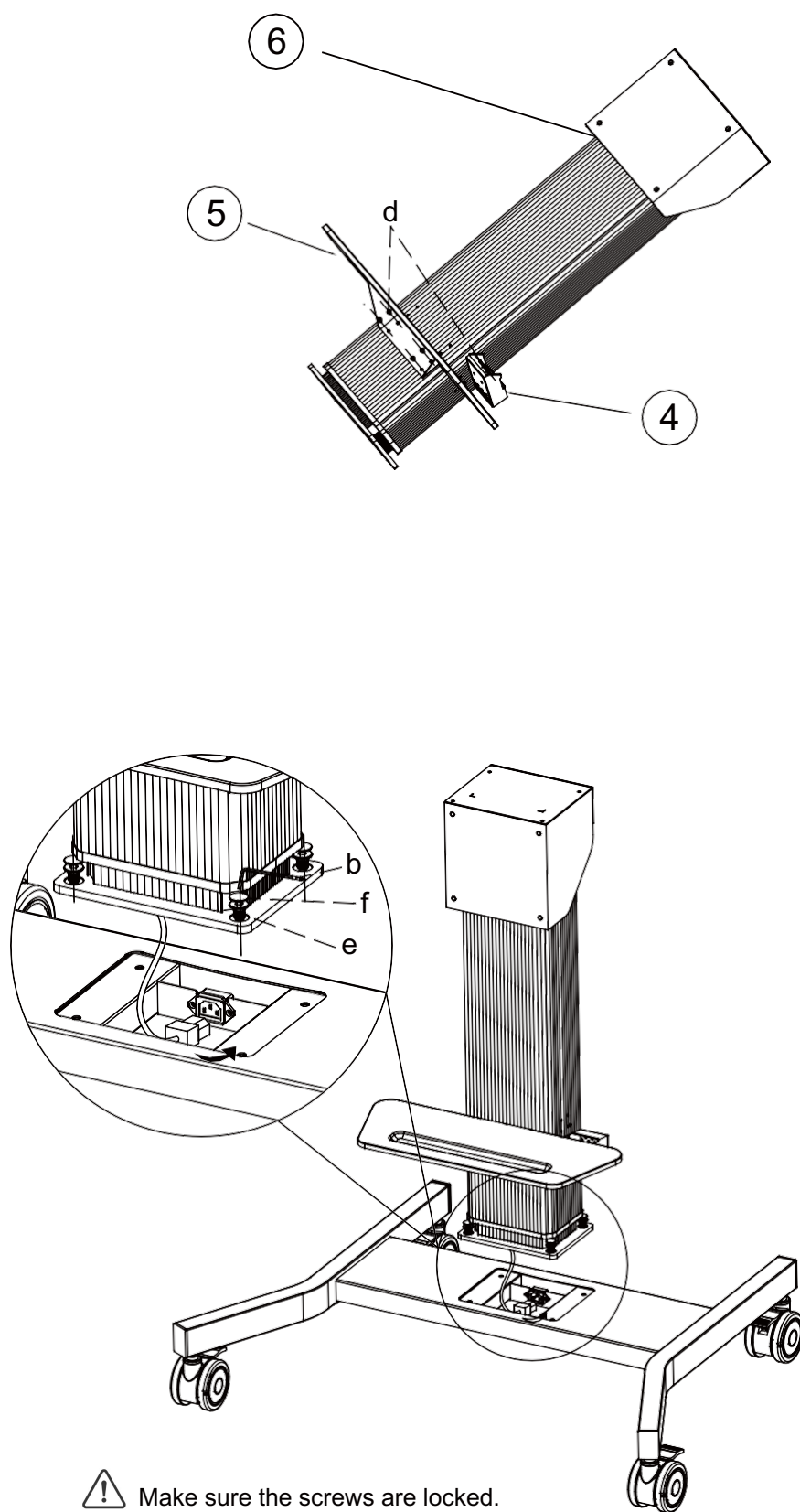


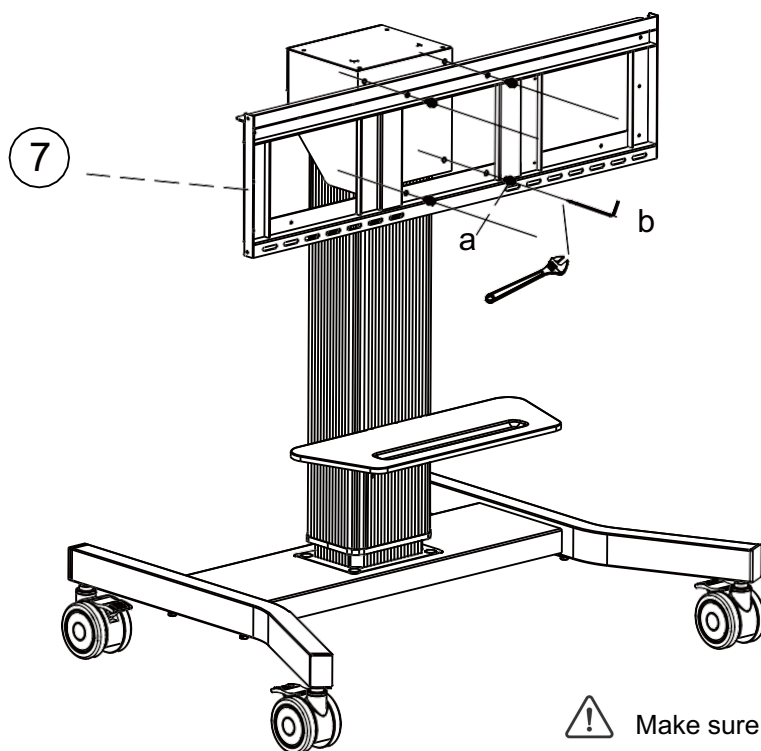
| a b c d e f g | | | | 9 |
|---------------|-------|--|---|---|
| | | | | |
| M8*25 | 17pcs | | a | |
| 6mm | 1pcs | | b | |
| Ø20*Ø12.5 | 5pcs | | c | |
| M4*8 | 7pcs | | d | |
| KM10*25 | 5pcs | | e | |
| Bolts | 5pcs | | f | |
| M5*16 | 3pcs | | g | |





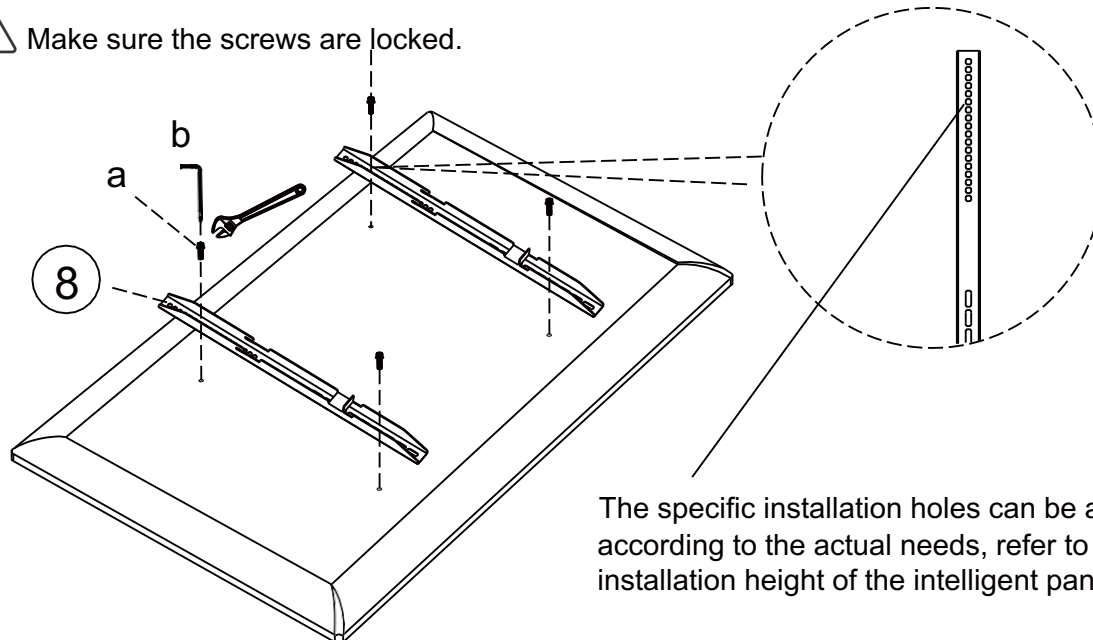
Assembly Steps





! Make sure the screws are locked.

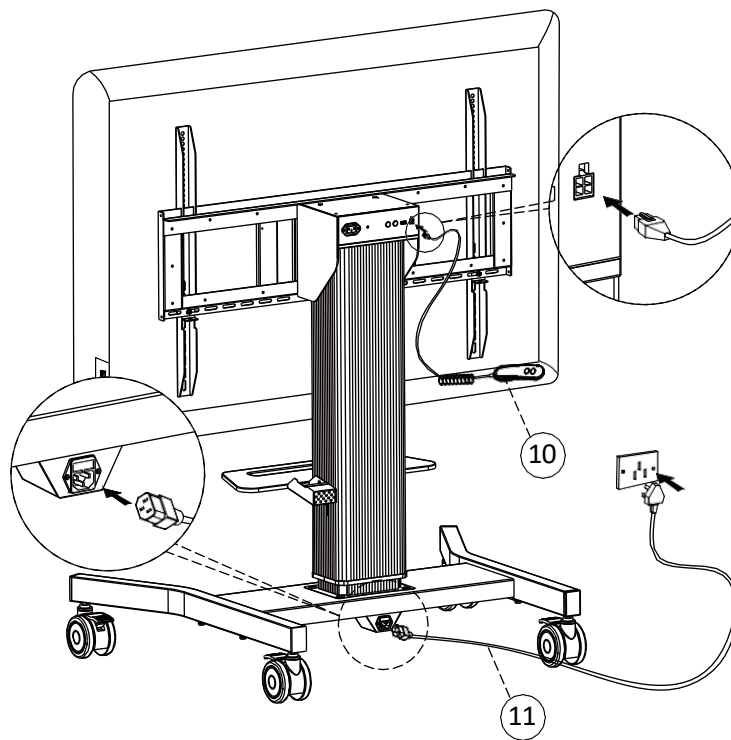
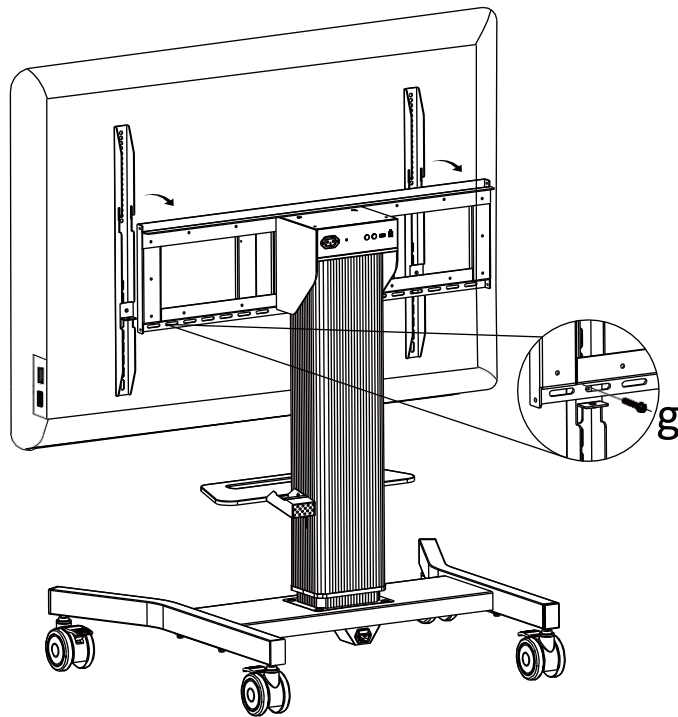
! Make sure the screws are locked.



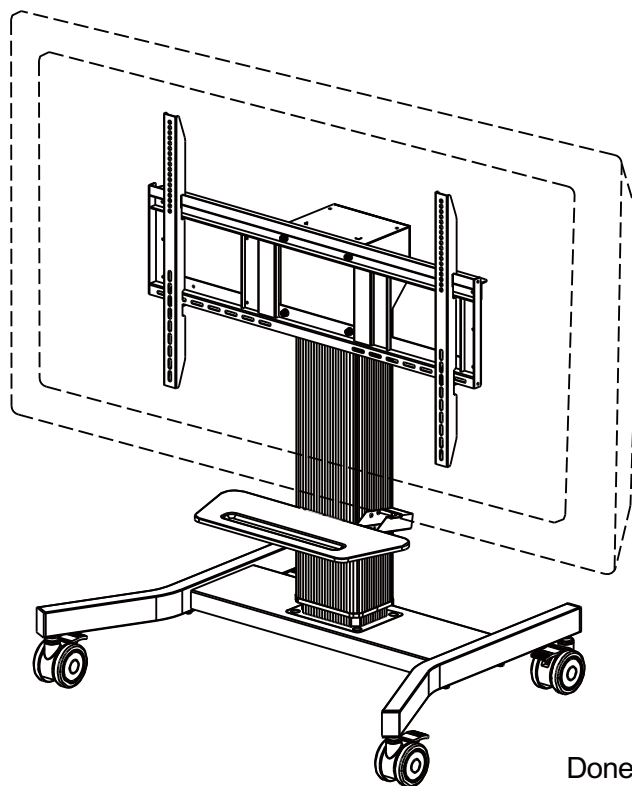
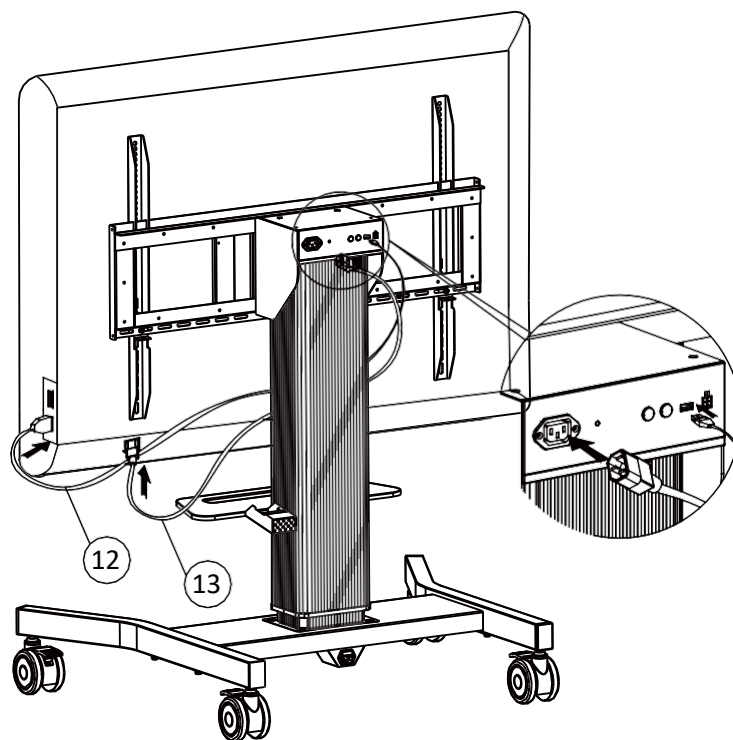
The specific installation holes can be adjusted according to the actual needs, refer to the installation height of the intelligent panel.



Assembly Steps



Assembly Steps

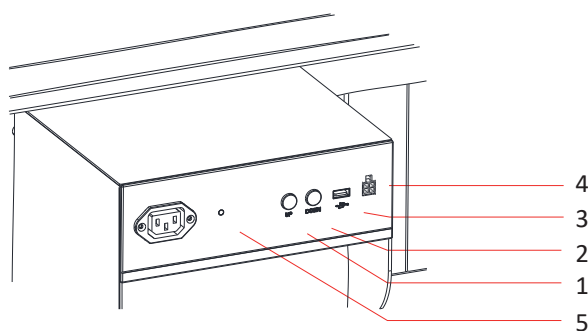


Done, enjoy !



Control Mode

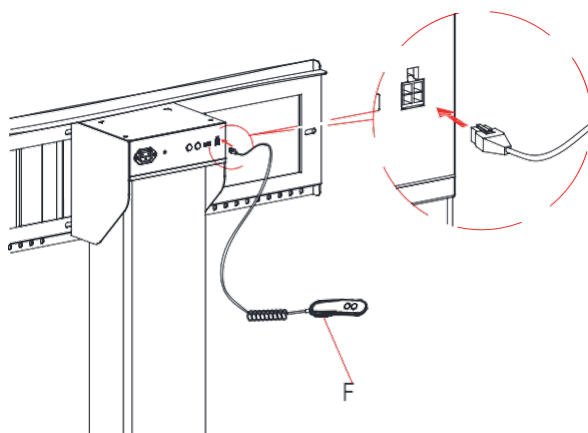
Control Panel



| No. | Items | Function description |
|-----|-----------------------|---|
| 1 | UP | Control the rise of the Electric Stand |
| 2 | Down | Control the fall of the Electric Stand |
| 3 | USB Interface | Connect the USB cable with a compatible display |
| 4 | Control Pad Interface | Connect with the Control Pad |
| 5 | Indicator Light | Standby: red;Work: blue |

• Control Pad

1. Connect the Control Pad to the interface on the lift column control panel.



2. There are two buttons on the Control Pad, corresponding to the UP Key and DOWN key of the Control Panel.

